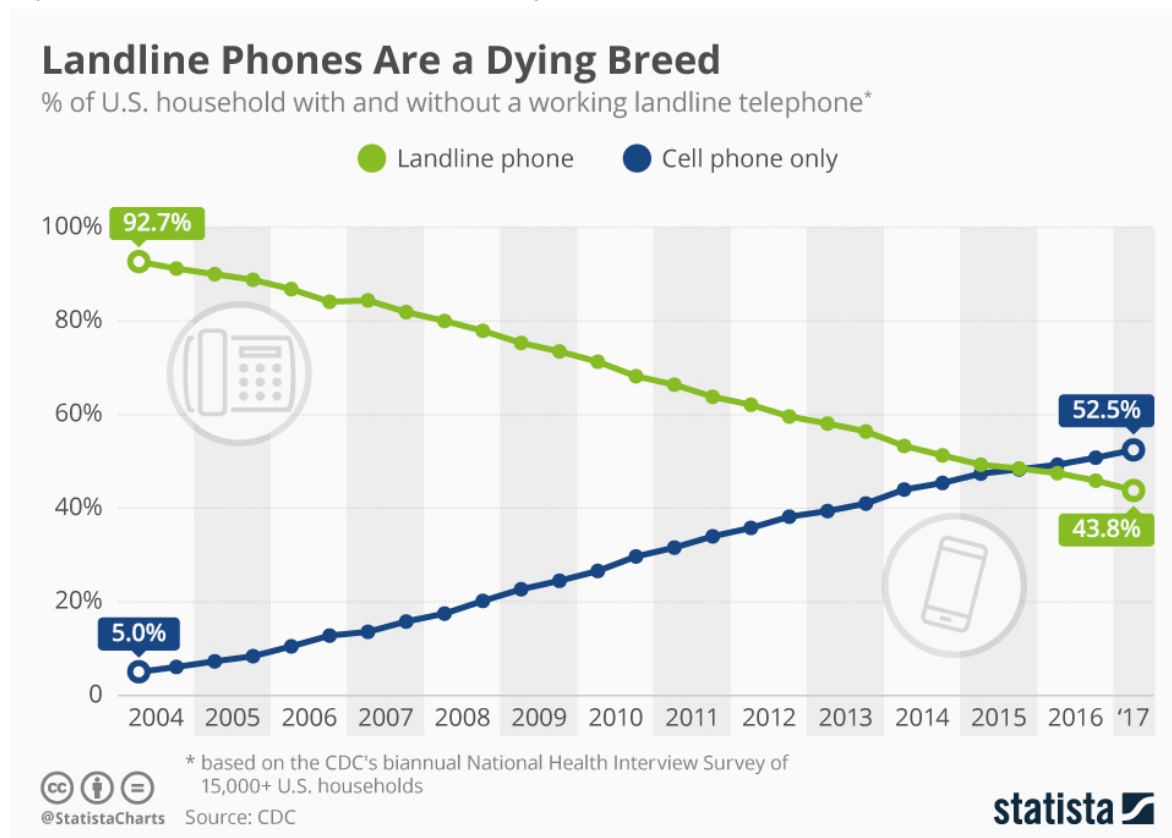


Equation of a Line: Landlines vs Cell Phones

The following graph appeared on the *Statista.com* website on Jan 8, 2018, and can be accessed at <https://www.statista.com/chart/2072/landline-phones-in-the-united-states/>.



The graphs that appear on this chart appear to be roughly linear. Let t be the number of years since 2004. Use the years 2004 and 2017 to calculate an equation for the lines representing the percentage of U.S. households with landlines $L(t)$ and with only cell phones $C(t)$.

Use the equations to predict when U.S. households with cell phone only will reach 80%.

In what year would you predict that U.S. households no longer have landline phones? Do you think this is a reasonable prediction?